

WHONET

Standard Report



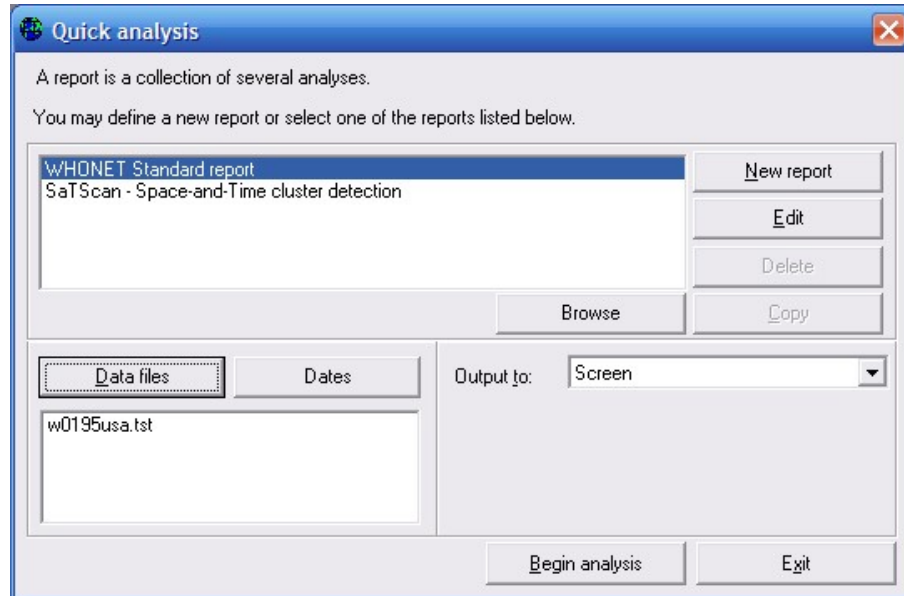
**WHO Collaborating Centre for
Surveillance of Antimicrobial Resistance**

Boston, July 2022

Part 1. Quick Analysis and Standard Reports

Quick Analysis is a new analysis area in WHONET. The intent is to provide much of the benefit of the WHONET interactive analysis program, but with minimal time and effort. Users can choose from a few Standard Reports offered by WHONET or they may create their own reports for use within the laboratory or by clinical services in other hospital areas, such as infection control or pharmacy.

For this example, begin WHONET, open the “WHO Test Hospital”, go to “Analysis” and select “Quick Analysis”.



Select “WHONET Standard report”, and choose the w0195who.tst data file. Click on “Begin Analysis”.

WHONET will perform multiple analyses on the selected data file(s), and prepare a multi-part overview of key results. A few of the sections are depicted below. (Note: The formatting and presentation of the standard report on the screen has not been optimized. This will be completed in the near future.)

Data fields [OK]

A - Summary

B - Recommendations
 C - Data fields
 D - Organisms
 E - Antibiotic resistance
 F - Microbiological alerts
 G - Low frequency alerts
 H - Laboratory configuration
 I - Data file configuration
 J - Invalid records

Section A - Summary

Data files = w0195usa.tst
 Number of laboratories = 1
 Number of isolates = 631

Today's date = 2-Jun-2006
 Observed specimen dates = 1-Jan-1995 - 31-Jan-1995
 Expected specimen dates = 1-Jan-1980 - 31-Dec-2006
 Number of isolates by year :
 = 0
 1995 = 622
 No value = 0

Data fields [OK]

A - Summary
 B - Recommendations
C - Data fields
 D - Organisms
 E - Antibiotic resistance
 F - Microbiological alerts
 G - Low frequency alerts
 H - Laboratory configuration
 I - Data file configuration
 J - Invalid records

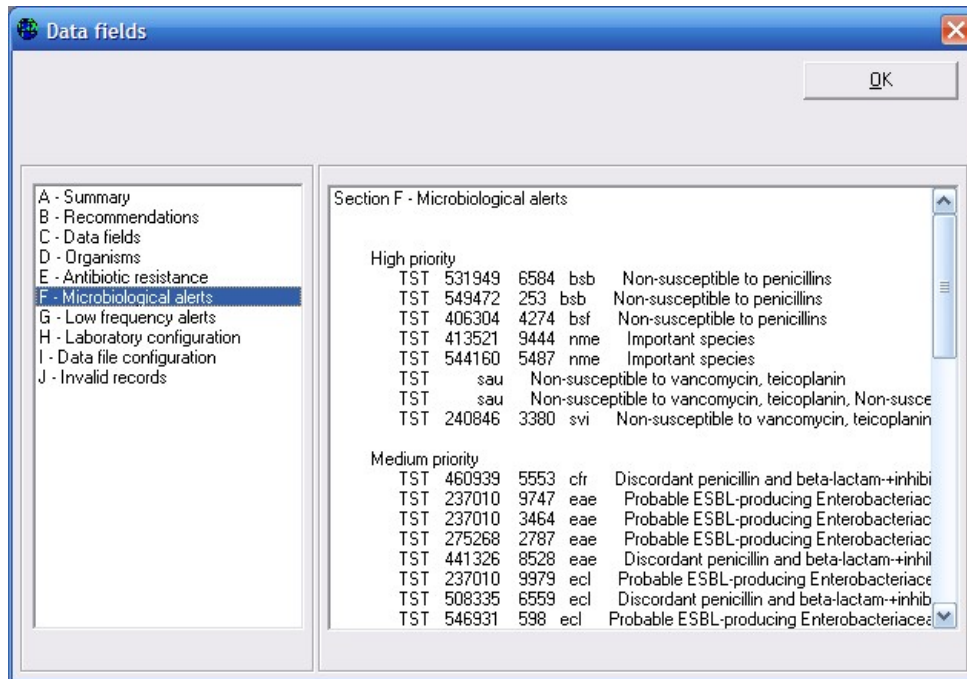
Section C - Data fields

Number of isolates = 631

Part 1 - Summary statistics

Data field	%Completed	%Invalid
Laboratory	100%	0%
Identification number	99%	0%
Date of birth	0.2%	0%
Location	99%	0%
Department	99%	0%
Age category	0.2%	0%
Specimen number	99%	0%
Specimen date	99%	0%
Specimen type	99%	0%
Organism	99%	0%
Comment	0.2%	0%

The following fields have no data.
 First name
 Last name
 Sex

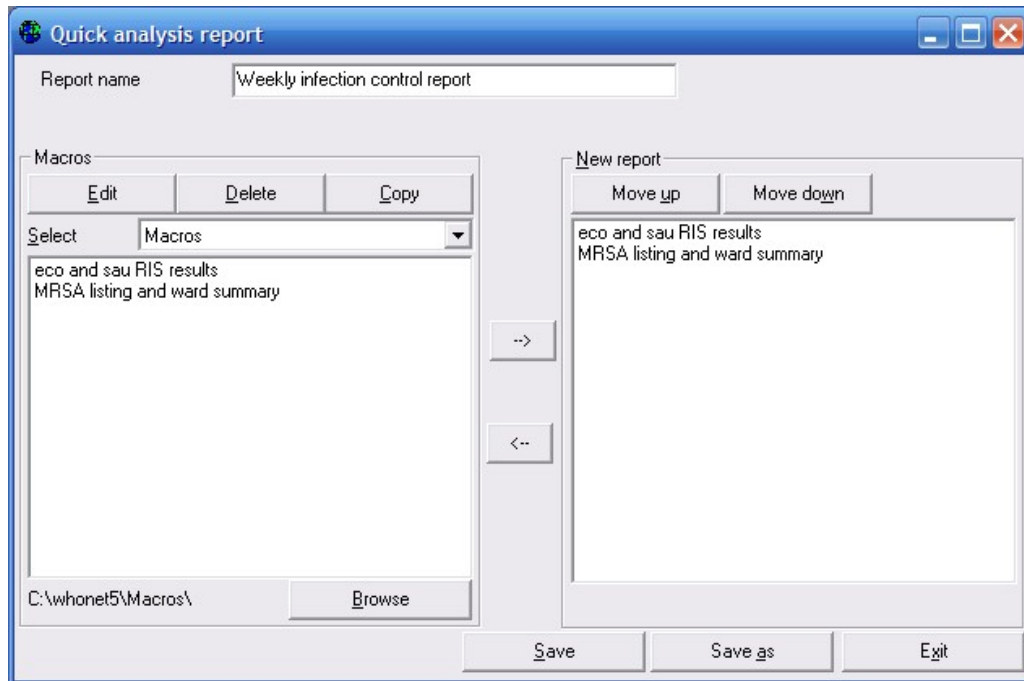


Part 2. Quick Analysis and User-defined Reports

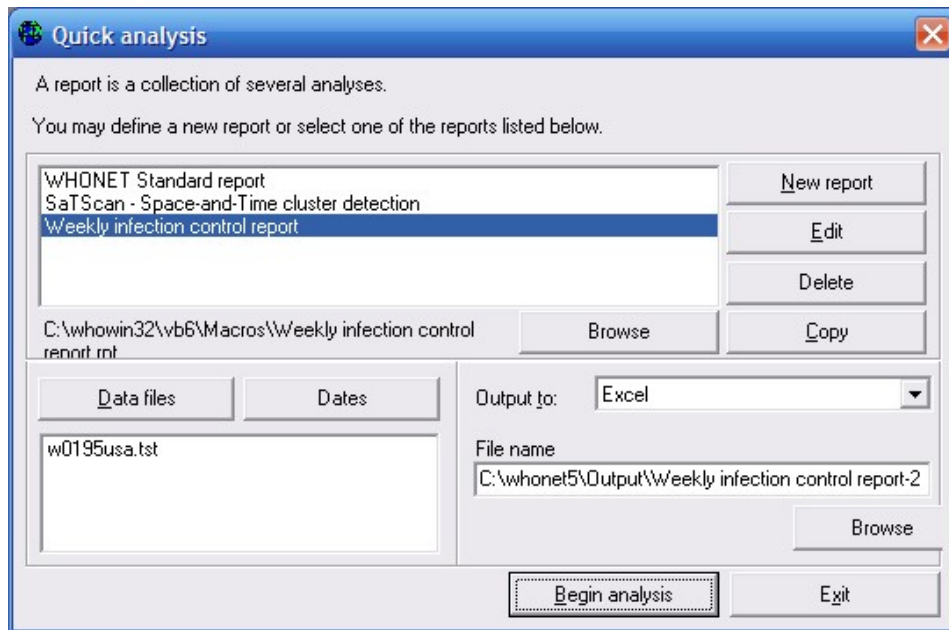
Part 3 illustrated the use of a multi-part analysis to provide various types of information to the user. In this part, the creation of a new report format by the user is described. To take advantage of this option, you will need to create one or macros, as described earlier in Part 1.

In the Quick Analysis screen, click on "New". Give a name to the new report, for example "Weekly infection control report". On the left side of the screen, you will see the macros that you created earlier in Part 1. Select these macros over to the right side of the screen.

A report typically consists of multiple macros, but a report can also include other reports. In this way, you can build up more complete reports from smaller subreports.

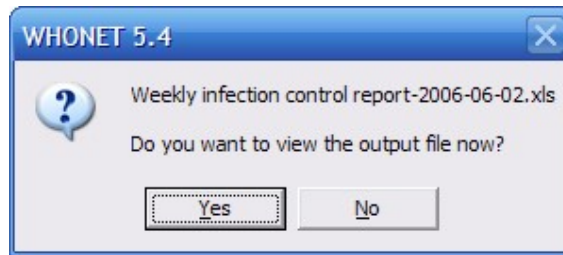


After you have selected the macros and reports to include in this report, click on Save. By default the name of this file will be “Weekly infection control report.rpt”, and the file will be saved in c:\whonet\macros. After you save the report file, click on “Exit” to return to the main Quick Analysis screen.



Choose the new report that you have just created. Choose the w0195who.tst data file. Change the “Output” destination to “Excel”. WHONET will give the default name: “C:\whonet\Output\Weekly infection control report-2006-06-02.xls” to the file, *i.e.* the name of the report plus the date of creation.

Begin the analysis. When the analysis is complete you will be asked if you want to view the new Excel file. Click “Yes”.



WHONET will now open Excel. If it does not pop up on the screen in front of you, check the list of open programs at the bottom of the screen to see if Excel is open. If so, click on Excel to see your results file.

Below is a portion of the Excel report created by WHONET. You will notice that the file has four worksheets. These correspond to the following four pages generated by the two macros selected for the report: 1. eco - %RIS, 2. sau - %RIS, 3. MRSA – Isolate listing, and 4. MRSA – Location summary.

Origin	Country	Laboratory	Identification number	First name	Last name	Sex	Date of birth	Age	Location	Institution	Department	Location type	Age
USA	TST		204613						ie		icu		
USA	TST		228431						hs		mx		
USA	TST		410205						op		out		
USA	TST		469706						op		out		
USA	TST		482382						op		out		
USA	TST		483404						4b		mx		
USA	TST		483404						4w		mx		
USA	TST		528635						hs		mx		
USA	TST		546339						hs		mx		