

# WHONET

**Isolate listing and summary**



**WHO Collaborating Centre for  
Surveillance of Antimicrobial Resistance**

**Boston, July 2022**

## Part 6. Isolate listing and summary

Another useful feature of WHONET is the creation of lists of isolates or patients that meet certain criteria – for example a lists of patients with MRSA or positive blood cultures from the neonatal intensive care unit. WHONET can create such lists as well as summarize the results in a number of different ways.

Click on “Analysis type”, and select “Isolate listing and summary”. For the summary, by default WHONET will use the variable “Organism” for the rows and “Specimen date” by month for the columns.

For this tutorial, make one small change to the options. Next to specimen date appears the option “Month”. Because there is only one month of data to analyze in this tutorial, it will be more interesting to show the results by day or by week. Select the option “Day”. Leave the other options unchanged, and click “OK”. Click on “Begin analysis”. In this example, WHONET will show you a list of all isolates from the data set with *Enterobacteriaceae*, as below.

Analysis Results																
File Edit Data																
Organism = All Enterobacteriaceae (n=186 isolates)																
Show hidden columns																
Copy table	Copy graph	Print table	Print graph	Continue	Specimen type	Organism	Organism type	NIT	TDB	CEP	AMP	AMK	GEN	SXT	FOX	C
Identification number	Location	Specimen number	Specimen date	Specimen type	Organism	Organism type	NIT	TDB	CEP	AMP	AMK	GEN	SXT	FOX	C	
8822823545	icu2	9141950184	1/13/1995	ur	clr	-	12			17	14		20	28		
9494551616	op	5908662293	1/11/1995	ur	clr	-	23			13	15		24	29		
9876786254	id	1266719029	1/23/1995	wd	clr	-				13	14		19	23	12	
	id	1266719029	1/23/1995	wd	cl-	-				18	12		22	26	26	
0180081335	op	9835142848	1/30/1995	sp	eae	-				06	06		20	24	06	
0565718535	icu1	6343517368	1/17/1995	sp	eae	-				06	06		18	27	06	
0591836826	csurg	3989191575	1/7/1995	ur	eae	-	12			06	06		18	19		
1750024603	icu1	7793316734	1/12/1995	sp	eae	-				06	06		18	24	06	
6130695730	id	5783805452	1/3/1995	sp	eae	-				06	06		16	22	06	
6885271928	id	4842579943	1/8/1995	sp	eae	-				06	06		18	21	06	
7103248832	icu1	1513627174	1/20/1995	sp	eae	-				06	06		19	25	06	
7401857119	med2	3993265680	1/1/1995	ur	eae	-		16		06	06		20	28		
9837392987	sicu	2264870850	1/21/1995	ur	eae	-		17		06	06		18	23		
0212379489	sicu	5455773388	1/16/1995	wd	ecl	-				10	10		18	23	09	
0591836826	icu1	5596078726	1/5/1995	ti	ecl	-				20	13		17	24	23	
0684226152	card	3427363378	1/7/1995	sp	ecl	-				06	06		19	24	06	
1006370926	id	2303939844	1/3/1995	wd	ecl	-				06	06		19	22	06	
1108707769	med1	8977801081	1/21/1995	sp	ecl	-				06	06		21	27	06	
1238843072	oncol	4268300617	1/26/1995	ur	ecl	-	13			06	06		20	24		
2083490590	oncol	2363930948	1/29/1995	sp	ecl	-				06	06		19	27	06	
3072695177	icu1	5452866009	1/8/1995	sp	ecl	-				06	06		19	24	06	
4866809785	id	5500608380	1/1/1995	wd	ecl	-				06	13		19	26	20	
6013382777	sicu	0344542480	1/25/1995	sp	ecl	-				06	06		19	24	06	
6130695730	id	5783805452	1/3/1995	sp	ecl	-				06	06		20	20	06	
6165399134	oncol	6409955034	1/17/1995	sp	ecl	-				06	06		20	27	06	
7300786709	sicu	3308688822	1/12/1995	sp	ecl	-				06	06		20	26	06	
7766059131	med1	3551383615	1/18/1995	sp	ecl	-				06	06		22	27	06	
8750101264	oncol	6749227339	1/27/1995	sp	ecl	-				06	06		20	27	06	
0152811778	id	1863102996	1/17/1995	bl	eco	-			21	26	23		21	22	18	25
0171654670	icu1	5118389605	1/19/1995	sp	eco	-				06	06		21	25	16	
0212379489	med1	3969768719	1/16/1995	ur	eco	-		17		18	18		18	24		
	id	3509465504	1/17/1995	ur	eco	-		20		26	23		22	20		
0318151964	card	1543173030	1/13/1995	wd	eco	-				20	20		21	25	25	
0448084085	op	5863219246	1/27/1995	wd	eco	-				17	18		21	06	22	
0565718535	csurg	0635971789	1/17/1995	ur	eco	-		19		17	06		22	17		
0762338817	er	1152426752	1/29/1995	wd	eco	-				19	19		20	06	23	
0816416492	op	3327722954	1/24/1995	ur	eco	-		17		16	18		17	24		
0948259328	oncol	9978927426	1/23/1995	ur	eco	-		18		18	21		17	25		
0958006210	er	2726753415	1/17/1995	ur	eco	-		20		21	21		21	25		
1013605973	csurg	916535901	1/31/1995	ur	eco	-		22		21	22		06	27		
1180558809	neuro	9922298254	1/12/1995	ur	eco	-		17		06	06		19	21		

Figure 15. Isolate listing of *Enterobacteriaceae*. The most important fields are displayed. To view additional columns, click on “Show hidden columns”.

This listing shows some of the most important data fields: identification number, location, specimen date, specimen type, organism, and antibiotic results (in this example, with disk diffusion zone diameters).

**Note:** You can configure the fields which appear in this isolate listing. To do so, you would have to go back to laboratory configuration “Modify laboratory”, “Data fields”. For the data fields that you want to appear in the list, make sure that the box for “Isolate listing” is checked.

If you click on the box “Show hidden columns”, WHONET will show you all of the available fields. As in other parts of WHONET, you can click on a column heading to sort the database by that column. This could be useful, for example, to find errors in the entry of specimen dates.

When you finish looking at the isolate listing, select “Continue”. WHONET will proceed to display the summary of the isolate listing. As mentioned earlier, this summary is comparing “Organism” and “Specimen date” (by day). But by changing the analysis parameters, you can summarize any WHONET variable by any other variable.

The tables present the day-by-day trend (number of patients per day) in the isolation of each species, while the graph displays the same information in graphic format.

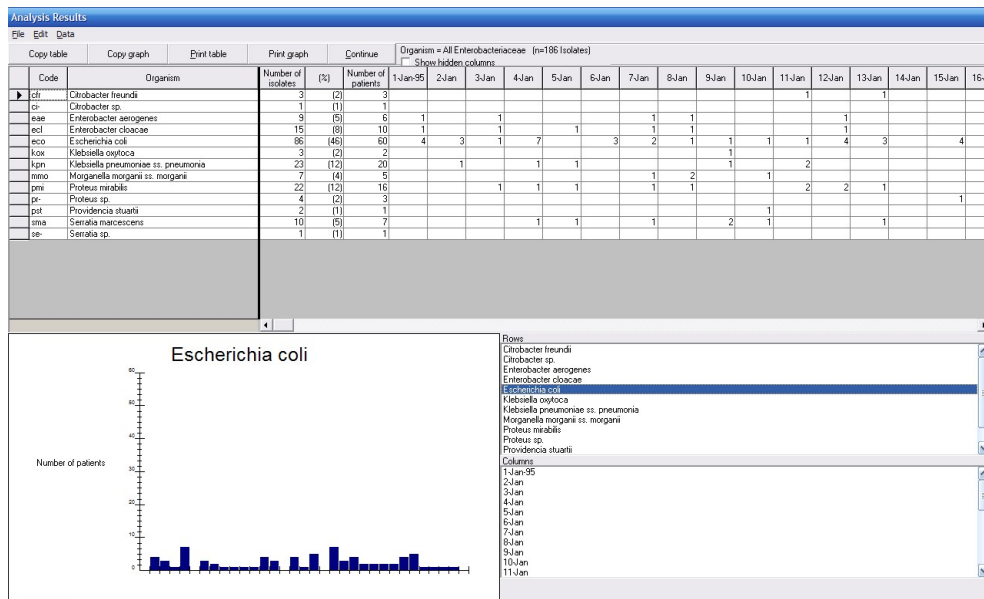


Figure 16. Summary of the *Enterobacteriaceae* isolate listing. The daily distribution of *E. coli* isolates is displayed in the graph.

Click on an organism name in the lower right-hand corner to see the distribution of that organism over time, or click on one of the days to see the distribution of organisms for that day. When you finish reviewing the results, click on “OK” to return to the main analysis screen.

Now that you have completed this tutorial, you can exit WHONET completely or continue with Data analysis 2. If you want to leave the software completely, click on “Exit” to leave the data analysis program, and then “File”, “Exit” to leave WHONET.