

WHONET

%RIS %S Summary



**WHO Collaborating Centre for
Surveillance of Antimicrobial Resistance**

Boston, July 2022

Part 1. Setting up an analysis: %RIS and test measurements

In the main analysis screen, there are three sections on the left that you must answer: Analysis type, Organisms, and Data files. On the right, there are some additional options that may be useful to you.

Analysis type: First, you must indicate the kind of analysis that you want WHONET to perform. To do this, click on “Analysis type”. You will see several analysis options. For this first analysis, select the option “%RIS and test measurements”. Click “OK” to return to the main analysis screen.

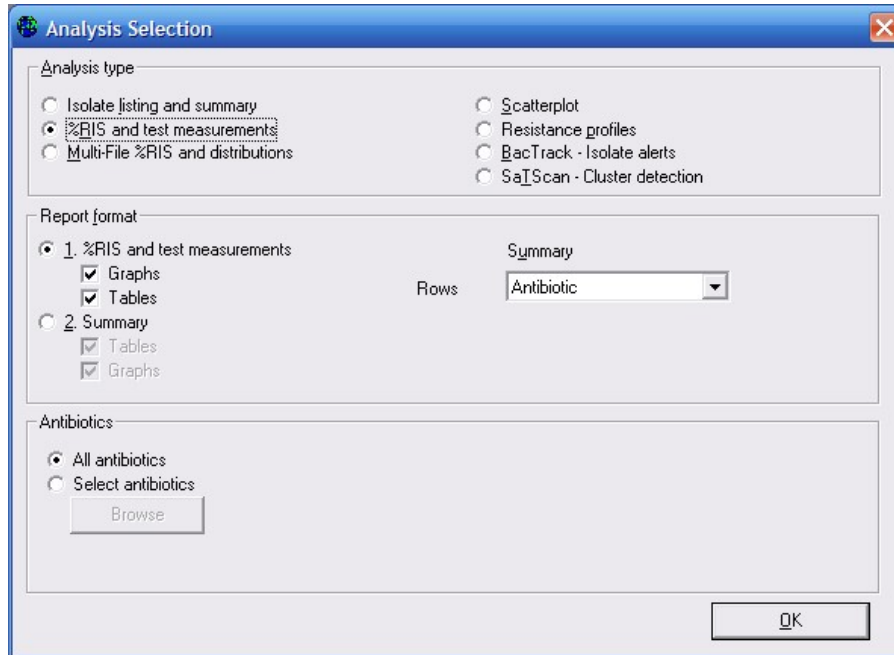


Figure 3. Analysis type: Select the kind of analysis you want to run, as well as the format of the output – graphs, tables, listings, summaries, etc.

Organisms: Click on Organisms. On this screen, as in many of the WHONET screens, you will see the options available to you on the left side of the screen. On the right side of the screen, you will put your selections.

On the left-hand side, you will first of all see a list of relatively common bacteria and fungi. Choose two organisms for this first analysis: *E. coli* (eco) and *S. aureus* (sau). You can select an organism in several possible ways: double-click on the organism or single-click on the organism and hit the right-arrow button “→” or type the three-letter code and hit <Enter>. Your screen should look like the following.

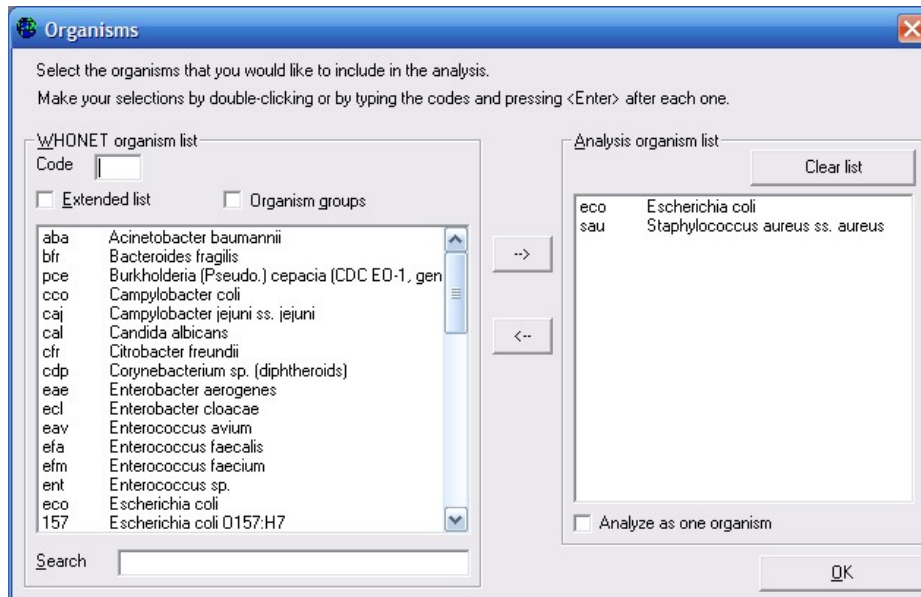


Figure 4. Organism: Select the organisms or organism groups that you want to analyze.

There are some other useful options on this screen as well.

Extended list: Initially, WHONET shows you the list of relatively common organisms. To see the complete list, click on “Extended list”. You can use the “Search” box to quickly find an organism.

Organism groups: If you click on “Organism groups”, you will see that WHONET permits you to analyze groups of microorganisms such as “All organisms”, “All Enterobacteriaceae”, and “All Salmonella”.

Analyze as one organism: WHONET generally will analyze each organism selected separately. If you would like WHONET to average results together from multiple organisms (for example “Klebsiella pneumoniae”, “Klebsiella oxytoca” and “Klebsiella sp.”), then click on the option “Analyze as one organism”.

When you finish looking at the available options, click “OK” to return to the main analysis screen.

Data files: Click on “Data files” to select the data files to include in the analysis. For this tutorial, select the file w0195who.tst”. You can do this by double-clicking on the file or by single-clicking and using the right-arrow button “->”. After selecting the file, click on “OK” to return to the main analysis screen.

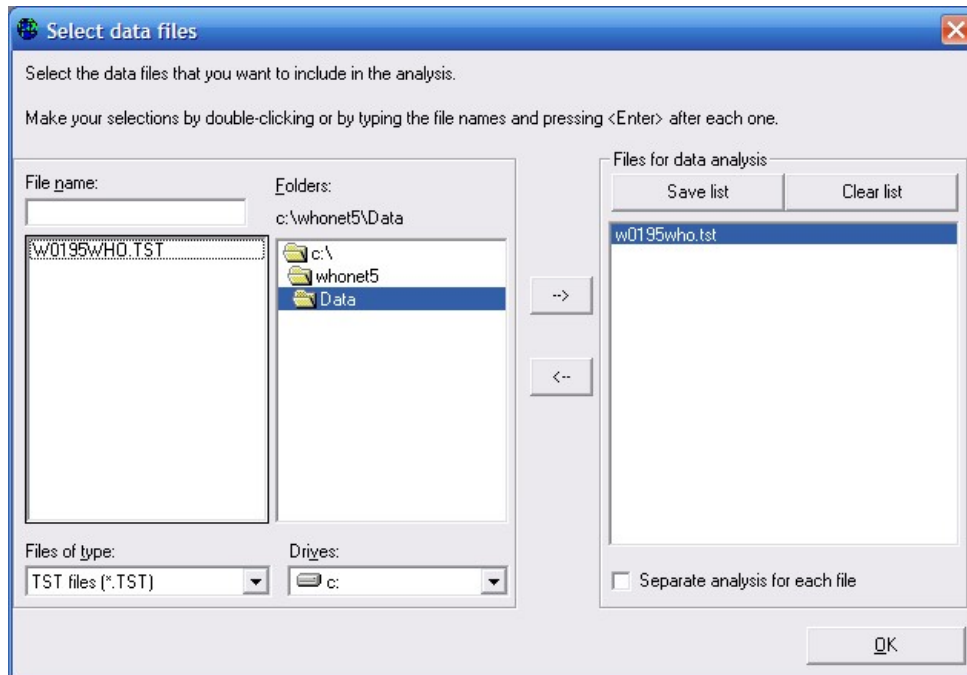


Figure 5. Data files: Select the data files to include in the analysis. Files to be analyzed should appear on the right side of the screen.

After making all of the above selections, your screen should look like the following:

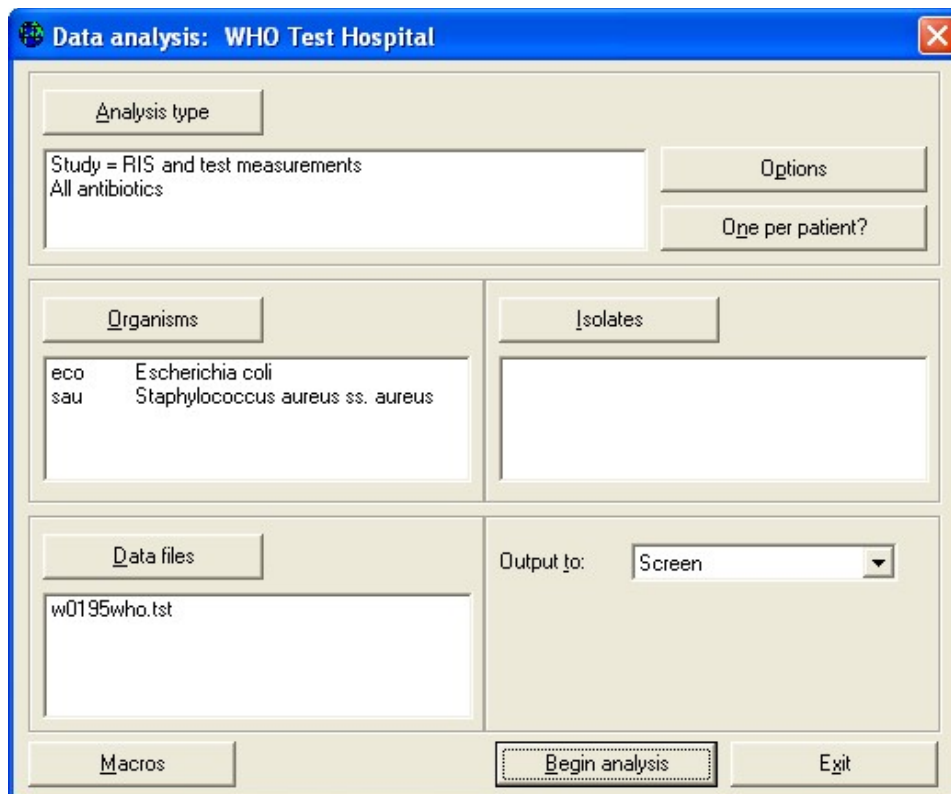


Figure 6. WHONET analysis screen. WHONET will run a “%RIS and test measurement” analysis on *E. coli* and *S. aureus* from the file w0195who.tst.