

WHONET

Analysis function introduction



**WHO Collaborating Centre for
Surveillance of Antimicrobial Resistance**

Boston, July 2022

WHONET Tutorial – Data Analysis 1

This tutorial covers the following topics.

- Part 1. Getting started
- Part 2. Setting up an analysis: %RIS and test measurements
- Part 3. Running the analysis and interpreting the results
- Part 4. Transferring WHONET results to Excel and other softwares
- Part 5. %Susceptible summary
- Part 6. Isolate listing and summary

This tutorial will illustrate some of the most important features of the WHONET data analysis program. Applications of these analyses include:

- continuous quality improvement: assessing laboratory test practices and utilization of laboratory services by clinical departments
- describing trends in the epidemiology of microbial populations and antimicrobial resistance
- characterizing the molecular epidemiology of antimicrobial resistance trains
- guiding antimicrobial therapy recommendations and policy
- supporting infection control interventions, in particular the early identification of hospital and community outbreaks

This tutorial focuses on two of the most commonly used analysis options: 1. %RIS and test measurements; and 2. Isolate listing and summary.

Part 1. Getting started

Double-click on the WHONET icon on your desktop to begin the software. You will see a screen similar to the following. For purposes of this tutorial, select the laboratory called “WHO Test Hospital”, and click on “Open laboratory”.

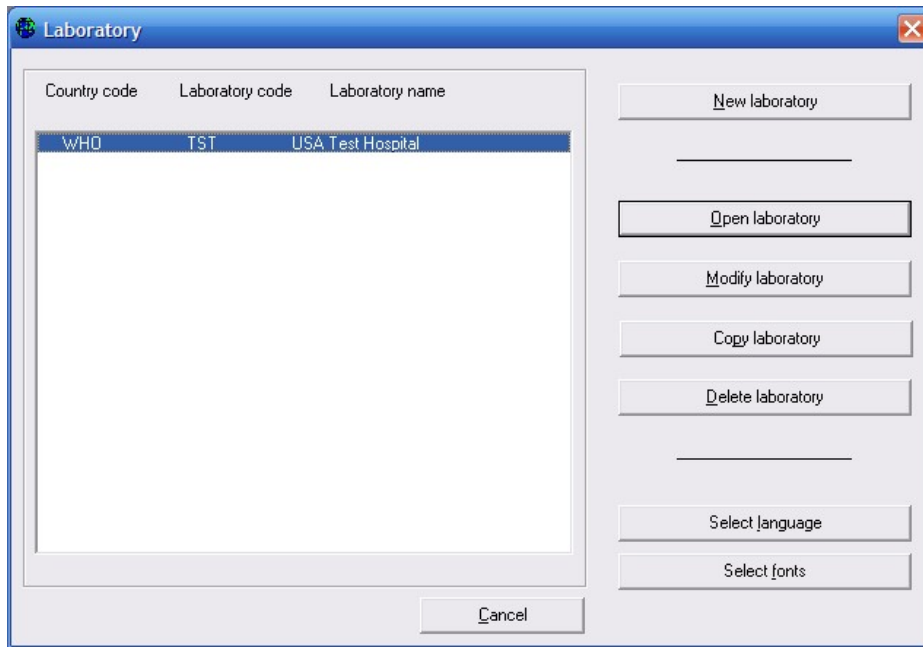


Figure 1. Laboratory selection.

From the main WHONET screen, click on “Data analysis” and “Data analysis” again. You will now see the main WHONET analysis screen. From this screen, you will be able to tell WHONET the type of analysis you want to perform.

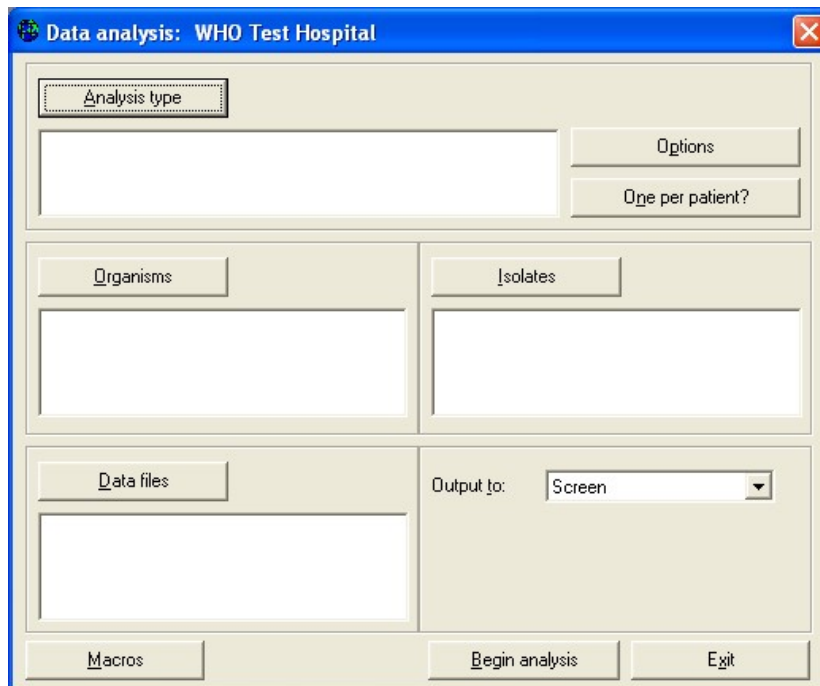


Figure 2. The WHONET data analysis screen.