

WHONET

Clinical report



**WHO Collaborating Centre for
Surveillance of Antimicrobial Resistance**

Boston, July 2022

Part 1. Clinical reports

Some laboratories use WHONET to report laboratory results back to clinicians. WHONET still has some limitations in this regard, but it has worked reasonably for many institutions.

To print out clinical reports or logbook isolate listings, click on “Print” from either the main Data entry screen or from the “View database” screen.

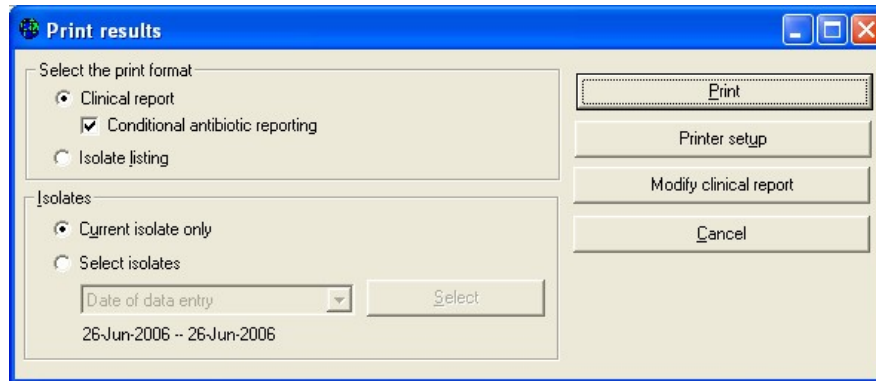


Figure 8. Print clinical reports and isolate listings

You have the choice between printing isolate listings (for example fifty isolates per page) or individual patient reports (one to three reports per page). You also have the option of choosing to print only the current isolate selected or a number of isolates with criteria that you specify (date of data entry, specimen number, *etc.*).

For this tutorial, you will print clinical reports and an isolate listing for the four isolates entered above.

1. Click on “Clinical reports”. Choose “Select isolates”. The default is to print out all isolates entered today (“Date of data entry” = today’s date). Click on “Print”, and then “Print” on the following screen. WHONET will now print the individual clinical reports, two per page.

WHO TUTORIAL HOSPITAL

Identification number = 12345
 Last name = Smith
 First name = John
 Date of birth = 1-Jan-1980

Location = Neurology
 Specimen number = 1111
 Specimen date = 12-Oct-2005
 Specimen type = Blood

Organism = Escherichia coli

Ampicillin	R	6 mm	Ceftriaxone	R	10 mm
Ciprofloxacin	S	22 mm	Gentamicin	I	13 mm
Imipenem	R	12 mm			

2-Jul-2006 23:42 R = Resistant I = Intermediate S = Susceptible NS = Non-susceptible

2. Click on "Isolate listing". Leave the other selections unchanged, and click on "Print", and then "Print" again. WHONET will now print out the isolate listing.

WHO Tutorial Hospital
 Organism = Gram positive organisms

Page 1
 4-Jul-2006 15:28

Date of data entry = 6/26/2006 - 6/26/2006
 Number of isolates = 1
 Isolate listing

Identification number	Specimen number	Organism	Location	Specimen date	Specimen type	Organism type	ERY	SXT	VAN	CRO	PEN
67890	2222	spn	nicu	27/01/06	+		18	7	17	8	8

Number of isolates = 1

WHO Tutorial Hospital
 Organism = Gram negative organisms

Page 2
 4-Jul-2006 15:28

Date of data entry = 6/26/2006 - 6/26/2006
 Number of isolates = 3
 Isolate listing

Identification number	Specimen number	Organism	Location	Specimen date	Specimen type	Organism type	AMP	CRO	CIP	GEN	IPM	SXT
12345	1111	eco	neuro	12/10/05	b1	-	6	10	22	13	12	
"	1111	eco	neuro	12/10/05	b1	-	6	10	22	13	12	
atcc25922	3333	eco	lab	06/01/15	qc	-	19	32	26	20	18	23

Number of isolates = 3

If you would like to change the format of the clinical report, you can choose the option “Modify clinical report” to make a number of changes. Among other options, you can indicate how many results to print per page, which fields should be included in the print, the fonts for the printout, and whether to include a standard page header or footer.

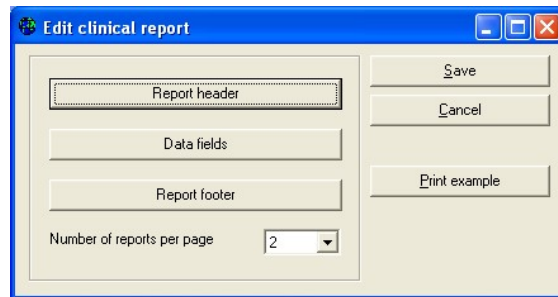


Figure 9. Editing the clinical report.